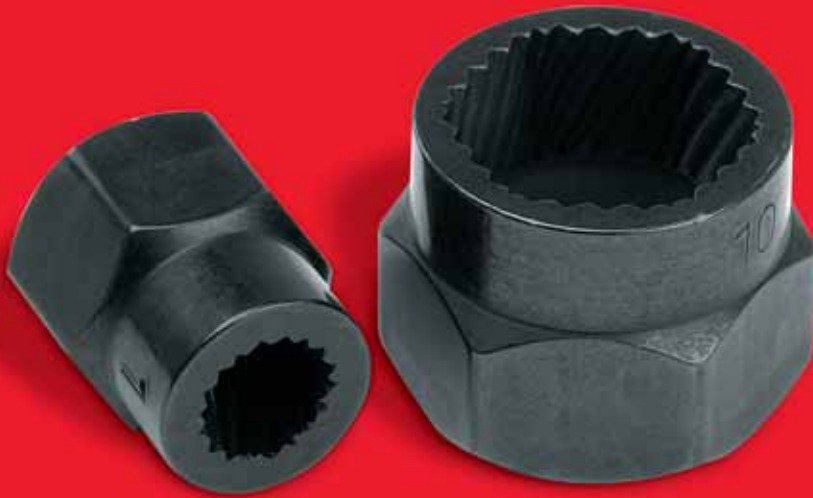


Bolt Extractor Sockets

- Proto® Bolt Extractor Sockets make it easy to remove rusted, rounded or damaged nuts and bolts.
- The working end has 18 - 30 teeth in a hexagonal configuration to help grip rounded hexagonal fasteners, round head bolts and pan head screws.
- Low profile design helps gain access to fasteners in tight spaces.
- The non-working end can be turned with wrenches or sockets.
- Proto® Bolt Extractor Sockets can be used in combination with other drive tools (such as extensions, universal joints or ratchets with short arc swings) to help reach fasteners in difficult locations.
- Through-hole design helps gain access to fasteners at the end of long bolts or studs.
- Sizes range from 1/4" - 5/8" and 7 - 16 mm. Each socket can turn multiple fastener sizes.
- Can be used on SAE or metric fasteners.
- Sets provided in mar-resistant tool holders.

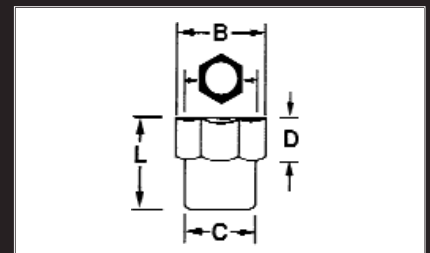


Part Number	Description	Width Inches	Height Inches	Length Inches	Weight lb.
J69X01	5 pc Bolt Extractor Socket Set (Contains: 7mm-1/4"-9/32"; 8mm-5/16"; 9mm-11/32"; 3/8"; 10mm)	1-7/8"	1-5/16"	7"	0.38
J69X02	5 pc Bolt Extractor Socket Set (Contains: 11mm-7/16"; 12mm; 13mm-1/2"; 14mm-9/16"; 15mm-16mm-5/8")	1-7/8"	1-5/16"	7"	0.49
J69X00	10 pc Bolt Extractor Socket Set (Contains: 7mm-1/4"-9/32"; 8mm-5/16"; 9mm-11/32"; 3/8"; 10mm; 11mm-7/16"; 12mm; 13mm-1/2"; 14mm-9/16"; 15mm-16mm-5/8")	3-3/4"	1-5/16"	7"	0.86

Part Number	Description	Hex size inches	Hex size mm	B inches	C inches	D inches	L inches	Weight lb.
J69X09	Bolt Extractor Socket 7mm, 1/4", 9/32"	1/4", 9/32"	7mm	9/16"	5/8"	3/8"	3/4"	0.05
J69X10	Bolt Extractor Socket 8mm, 5/16"	5/16"	8mm	9/16"	5/8"	3/8"	3/4"	0.04
J69X11	Bolt Extractor Socket 9mm, 11/32"	11/32"	9mm	5/8"	11/16"	3/8"	3/4"	0.06
J69X12	Bolt Extractor Socket 3/8"	3/8"	-	5/8"	11/16"	3/8"	3/4"	0.05
J69X13	Bolt Extractor Socket 10mm	13/32"	10mm	3/4"	13/16"	3/8"	3/4"	0.08
J69X14	Bolt Extractor Socket 11mm, 7/16"	7/16"	11mm	3/4"	13/16"	3/8"	3/4"	0.07
J69X15	Bolt Extractor Socket 12mm	15/32"	12mm	7/8"	7/8"	3/8"	3/4"	0.08
J69X16	Bolt Extractor Socket 13mm, 1/2"	1/2"	13mm	7/8"	7/8"	3/8"	3/4"	0.08
J69X18	Bolt Extractor Socket 14mm, 9/16"	9/16"	14mm	29/32"	15/16"	3/8"	3/4"	0.09
J69X20	Bolt Extractor Socket 15mm, 16mm, 5/8"	5/8"	15mm, 16mm	29/32"	15/16"	3/8"	3/4"	0.08

Most Proto Bolt Extractor Sockets can be used on multiple fastener sizes.

REFERENCE MEASUREMENT KEY



25.4 mm = 1 inch
454 grams = 1 pound

©2005 THE STANLEY WORKS

2195 East View Parkway, Suite 103 Conyers, GA 30013
www.stanleyproto.com Customer Service: 1-800-800-TOOL

⚠ WARNING: Work Safely With Tools Wear Safety Goggles.